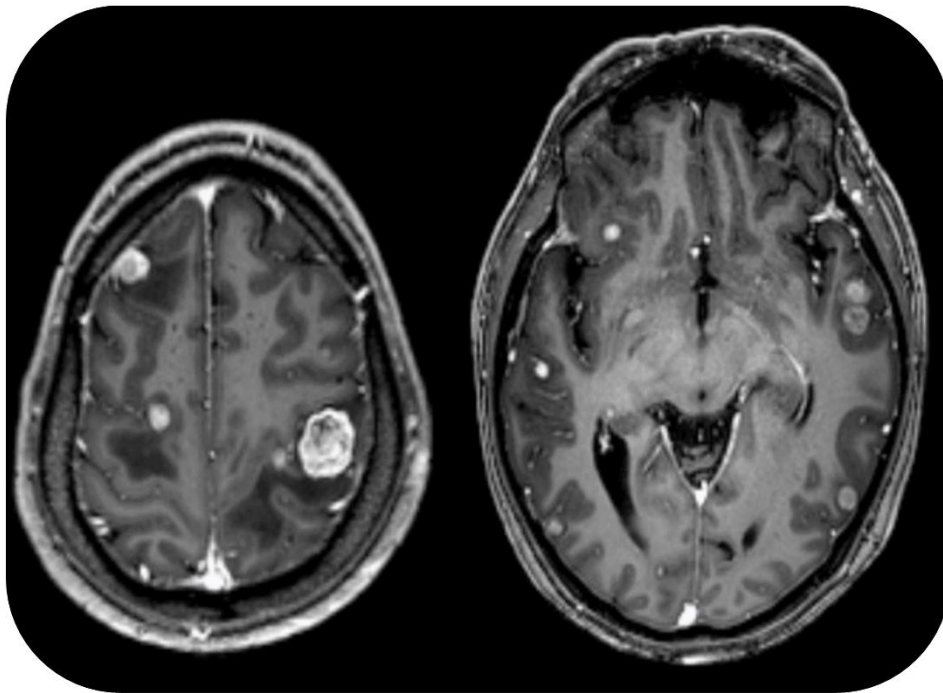


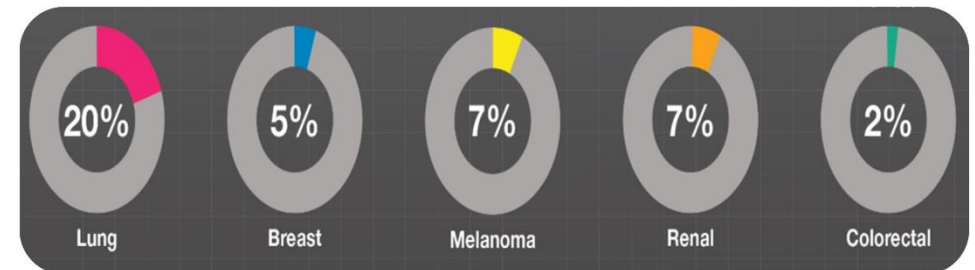
Brain Metastasis

Brain **metastasis** is a cancer **spread to the brain** from other parts of the body

A common complication of cancer



The primary tumors and the associated brain metastases incidence proportions



Statistics for metastasis

Est. annual 327,822 cases

The global incidence of malignant brain tumors was 4.25 cases per 100,000 person-years (2019 data)

Heuron METS

Detection of metastases by **contrast-enhanced T1-weighted MR image**

Features

- Detects suspected multiple lesions including small-sized (2 mm or larger in diameter) tumors in the brain
- Provides total and each volume of the multiple lesions along with Talairach coordinates (atlas) of each lesion detected

